

MYSTERIOUS CLOUDS PRODUCED WHEN AIRCRAFT INADVERTENTLY CAUSE RAIN OR SNOW

June 14, 2010

BOULDER—As turboprop and jet aircraft climb or descend under certain atmospheric conditions, they can inadvertently seed mid-level clouds and cause narrow bands of snow or rain to develop and fall to the ground, new research finds. Through this seeding process, they leave behind odd-shaped holes or channels in the clouds, which have long fascinated the public.

The key ingredient for developing these holes in the clouds: water droplets at subfreezing temperatures, below about 5 degrees Fahrenheit (-15 degrees Celsius). As air is cooled behind aircraft propellers or over jet wings, the water droplets freeze and drop toward Earth.



Hole-punch clouds have long fascinated the public. (Photo by Alan Sealls, chief meteorologist, WKRG-TV.)

“Any time aircraft fly through these specific conditions, they are altering the clouds in a way that can result in enhanced precipitation nearby,” says Andrew Heymsfield, a scientist with the National Center for Atmospheric Research (NCAR) and lead author of a new study into the phenomenon. “Just by flying an airplane through these clouds, you could produce as much precipitation as with seeding materials along the same path in the cloud.”

Precipitation from planes may be particularly common in regions such as the Pacific Northwest and western Europe because of the frequent occurrence of cloud layers with supercooled droplets, Heymsfield says.

The study, which addresses longstanding questions about unusual cloud formations known as hole-punch or canal clouds, is being published this month in the *Bulletin of the American Meteorological Society*. It was funded by the National Science Foundation, NCAR’s

sponsor. In addition to NCAR, the research team included scientists from Colorado State University and the University of Wyoming, as well as a retired cloud physicist.

PUNCHING HOLES IN CLOUDS

Across the world, sightings of blue-sky holes piercing a cloud layer have triggered bemusement and speculation. A front-page feature on Yahoo! carried the headline “A Halo over Moscow” after photos emerged of just such a hole in October 2009.

As far back as the 1940s, scientists have wondered about the causes of these clouds with gaps seemingly made by a giant hole punch. Researchers have proposed a number of possible aviation-related causes, from acoustic shock waves produced by jets, to local warming of the air along a jet’s path, to the formation of ice along jet contrails. Indeed, the earliest observations implicated jet aircraft, but not propeller aircraft, as producing the holes.

Researchers in the 1980s observed that propeller aircraft could transform supercooled droplets into ice crystals, and experiments were launched in the 1990s to characterize the phenomenon.

But scientists had not previously observed snow as it fell to the ground as a result of aircraft until Heymsfield and his colleagues happened to fly through some falling snow west of Denver International Airport with an array of instruments. While the research team did not notice anything unusual at the time of their 2007 flight, a subsequent review of data from a ground-based radar in the area revealed an unusual echo, indicating that the band of precipitation had evolved quickly and was unusually shaped.

“It became apparent that the echo had evolved in a unique way, but I had no satisfactory explanation,” says Patrick Kennedy, a Colorado State University radar engineer who spotted the unusual readings and helped write the study.

PIECING TOGETHER CLUES

Heymsfield and Kennedy went back through data from their aircraft's forward- and downward-viewing camera. They noticed a hole in an otherwise solid deck of altocumulus clouds in the forward imagery, as well as a burst of snow that extended to the ground.

Since the hole was oriented in the same direction as the standard flight tracks of commercial aircraft in the region, Heymsfield surmised that a plane flying through the cloud might have somehow caused ice particles to form and "snow out" along its path, leaving a canal-shaped hole-punch cloud behind.

A subsequent review of flight track records from the Federal Aviation Administration revealed that turboprop planes operated by two airlines flew close to the hole-punch location, following a standard flight path that produced the subsequent band of snow. Snow crystals began falling about five minutes after the second aircraft flew through the cloud. The snowfall, in a band about 20 miles long and 2.5 miles wide, continued for about 45 minutes, resulting in about two inches of snow on the ground.

The researchers also examined data from onboard spectrometers that profiled the snowflakes within the band of snow beneath the hole punch. These plate-shaped crystals showed evidence of riming (accumulation of liquid water), whereas ice particles elsewhere in the cloud showed little or no riming.

"This tells us that the aircraft literally 'seeded' the cloud just by flying through it," Heymsfield says.

The cloud layers outside Denver contained supercooled droplet—particles of water that remain liquid even at temperatures as low as -35 degrees Fahrenheit (about -34 degrees C). When a turboprop plane flies through such a cloud layer, the tips of its propellers can cause the air to rapidly expand. As the air expands, it cools and causes the supercooled droplets to freeze into ice particles and fall out of the clouds as snow or rain.

The research team conducted additional studies into the cooling over the wings of jet aircraft, thereby accounting for earlier observations of the impact of jets. Jet aircraft need colder temperatures (below about -4 to -13 degrees F, or -20 to -25 degrees C) to generate the seeding effect. Air forced to expand over the wings as the aircraft moves forward cools and freezes the cloud droplets.

"This apparently happens frequently, embedded in the cloud layers," Heymsfield says. "You wouldn't necessarily see it from satellite or from the ground. I had no idea this was happening. I was sitting in back of the plane. And then this data set just fell in our laps. It was a lucky break."



Andrew Heymsfield

About the article:

Title: "Aircraft-Induced Hole Punch and Canal Clouds: Inadvertent Cloud Seeding"

Authors: Andrew Heymsfield, Patrick Kennedy, Steve Massie, Carl Schmitt, Zhihen Wang, Samuel Haimov, and Art Rangno

Publication: *Bulletin of the American Meteorological Society*

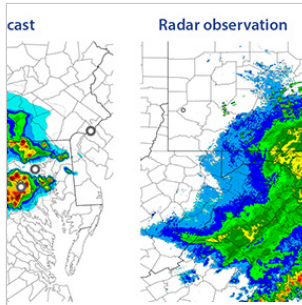
***Media & nonprofit use of images:** Except where otherwise indicated, media and nonprofit use permitted with credit as

indicated above and compliance with UCAR's terms of use. Find more images in the UCAR Digital Image Library.

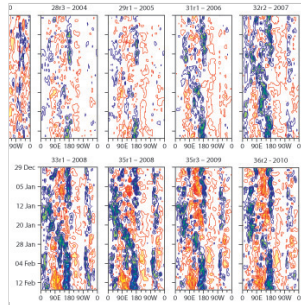
The University Corporation for Atmospheric Research manages the National Center for Atmospheric Research under sponsorship by the National Science Foundation. Any opinions, findings and conclusions, or recommendations expressed in this publication are those of the author(s) and do not necessarily reflect the views of the National Science Foundation.

National Center for Atmospheric Research | University Corporation for Atmospheric Research @UCAR | <https://www2.ucar.edu/atmosnews/news/2185/mysterious-clouds-produced-when-aircraft-inadvertently-cause-rain-or-snow>

Recommended for you



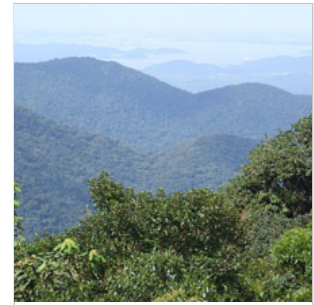
High-end weather modeling, hour by hour | UCAR - www2.ucar.edu



Between weather and climate | UCAR - University www2.ucar.edu



Trash burning worldwide significantly worsens www2.ucar.edu



Tropical forests have large appetite for carbon dioxide | www2.ucar.edu

AddThis