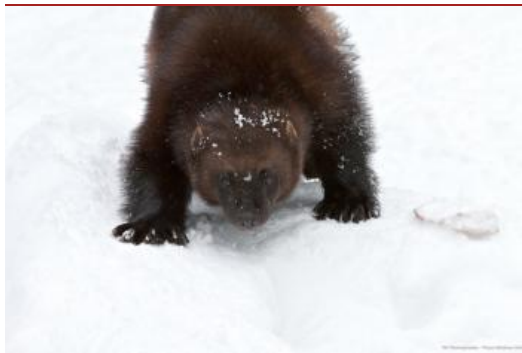


WOLVERINE POPULATION THREATENED BY CLIMATE CHANGE

February 03, 2011

BOULDER—The aggressive wolverine may not be powerful enough to survive climate change in the contiguous United States, new research concludes.

Wolverine habitat in the northwestern United States is likely to warm dramatically if society continues to emit large amounts of greenhouse gases, according to new computer model simulations carried out at the National Center for Atmospheric Research (NCAR). The study found that climate change is likely to imperil the wolverine in two ways: reducing or eliminating the springtime snow cover that wolverines rely on to protect and shelter newborn kits, and increasing August temperatures well beyond what the species may be able to tolerate.



Wolverines make their home mainly in the boreal forests and tundra regions of North America, Europe, and Asia. (Photo by Vince Maidens, Creative Commons License.)

“Species that depend on snow cover for their survival are likely to be very vulnerable to climate change,” says NCAR scientist Synte Peacock, the author of the study. “It’s highly uncertain whether wolverines will continue to survive in the lower 48, given the changes that are likely to take place there.”

Peacock’s research focused on mountainous regions of the Northwest, the primary habitat of the wolverine population in the contiguous United States. The study did not look into the impacts of climate change on regions where wolverines are more numerous, such as Canada, although other research has indicated those areas will likely warm significantly as well.

The study was published last week in *Environmental Research Letters*. It was funded by the National Science Foundation, NCAR’s sponsor.

AN ANIMAL BUILT FOR THE COLD

Wolverines make their home mainly in the boreal forests and tundra regions of North America, Europe, and Asia. Their thick, oily fur insulates them from frost and large padded paws help them run through deep snow. While some 15,000 or more wolverines are believed to roam Canada and an unknown number in Alaska, only a few dozen to a few hundred are believed to live in the contiguous United States, almost entirely in mountainous areas in Wyoming, Idaho, Montana, and Washington.

Wolverines inhabit regions that have late-season snow cover and relatively cool summer temperatures. Female wolverines make their springtime dens in the snow, which provides warmth to the newborn kits and protects them from predators.

Biologists are dubious that the species could survive in regions with little spring snow or significantly higher summertime temperatures. Concerned over habitat loss and the potential threat of climate change, the U.S. Fish & Wildlife Service announced in December 2010 that the wolverine warrants protection under the Endangered Species Act, but delayed that protection because other species took higher priority.

To project the future climate in regions of the contiguous United States where wolverines live, Peacock analyzed results from new simulations carried out by a team of researchers at NCAR using the newest version of the Community Climate System Model (which was developed by scientists at the Department of Energy and NCAR with colleagues at other organizations). She analyzed three scenarios of greenhouse gas emissions: low (carbon dioxide emissions stay at present-day levels until 2020 and then decline to zero by the early 2080s); medium-low (emissions rise slightly until 2040 and then decline sharply toward the end of the century); and high (emissions continue to increase unabated).

In the high emissions scenario, the computer simulations showed spring snow cover nearly or completely vanishing during the second half of this century in present-day wolverine habitat. Similarly, spring snow cover in the medium-low scenario became greatly diminished, with many years experiencing zero snow cover. Under the low emissions scenario, springtime snow cover conditions remained similar to those of the present day.

The computer projections also showed that August temperatures may increase dramatically. Whereas August temperatures

currently top off at about 72 degrees F (22 degrees C) in areas where wolverines live, maximum daily temperatures by the end of the century were projected to frequently exceed 90 degrees F (32 degrees C) under the two higher-emissions scenarios.

“Unless the wolverine is able to very rapidly adapt to summertime temperatures far above anything it currently experiences, and to a spring with little or no snow cover, it is unlikely that it will continue to survive in the contiguous U.S. under a high or medium-low emissions scenario,” the study concludes.

The model simulations also indicated the extent to which climate change may transform the West, where society depends on mountain snowpack. This critical source of water could decrease by a factor of three to four over Idaho, western Montana, and western Wyoming by the end of this century under the high emissions scenario. Even under the medium-low emissions scenario, snowpack could drop by a factor of two to three in these regions.

Peacock checked the accuracy of the model by comparing simulations of late 20th century climate with observations. Results indicated that the model did a good job simulating climate conditions in Idaho, Montana, and Wyoming. Since the model tended to underestimate snowpack in Washington, Peacock did not include that state in the study.

About the article

Title: Projected 21st century climate change for wolverine habitats within the contiguous United States

Author: Synte Peacock

Publication: *Environmental Research Letters*, January 27, 2011



Synte Peacock (@UCAR, Photo by Carlye Calvin. This image is freely available for media use. For more information, see [Media & nonprofit use](#).*)

***Media & nonprofit use of images:** Except where otherwise indicated, media and nonprofit use permitted with credit as indicated above and compliance with UCAR's terms of use. Find more images in the UCAR Digital Image Library.

The University Corporation for Atmospheric Research manages the National Center for Atmospheric Research under sponsorship by the National Science Foundation. Any opinions, findings and conclusions, or recommendations expressed in this publication are those of the author(s) and do not necessarily reflect the views of the National Science Foundation.

National Center for Atmospheric Research | University Corporation for Atmospheric Research
@UCAR | <https://www2.ucar.edu/atmosnews/news/3783/wolverine-population-threatened-climate-change>